

ISI PARK SHOPHOUSE



Located in thriving ISI PARK Veng Sreng, **ISI PARK Shophouse** lies along 16-meter KMH Boulevard offering a prime location for your business expansion and better living near the bustling K Mall, ISI Tower, AIA Stadium and other landmarks in the area.



Number of Residents in 2023

491,500



Number of Footfall

6,300



Number of Tenants

42 Retail Stores



Number of Events Hosted at K Mall

Over 60 Events



*Data from 2023

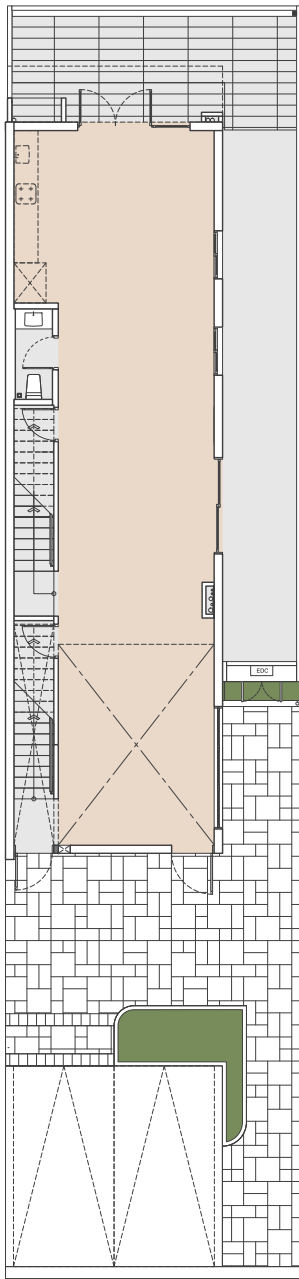




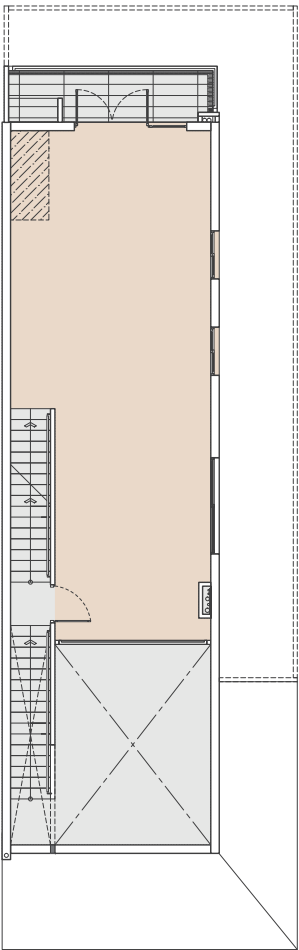
Unit Type **A1**

Retail Area

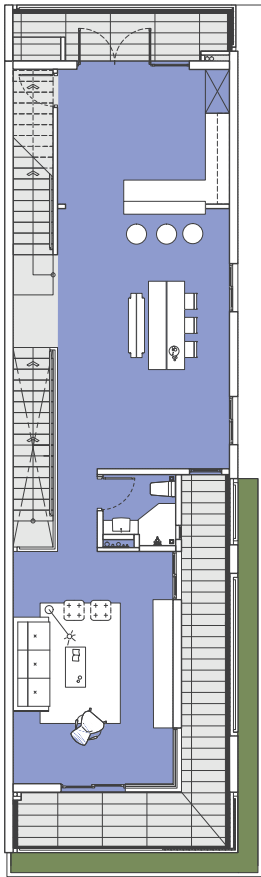
Residential Area



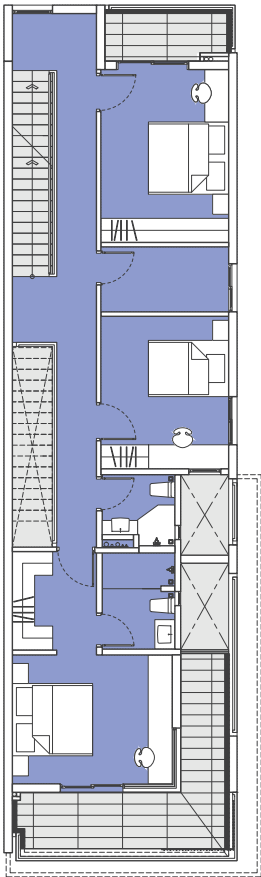
Ground Floor



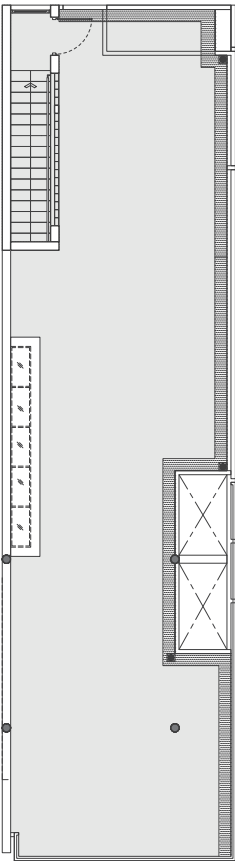
Mezzanine Floor



First Floor



Second Floor



Roof Floor

LAND SIZE
5.2m x 24.9m

HOUSE SIZE
5.2m x 17.95m

Retail Space

Retail Space

Living Room x 1
Dining Room x 2
Bathroom x 2
Kitchen x 1

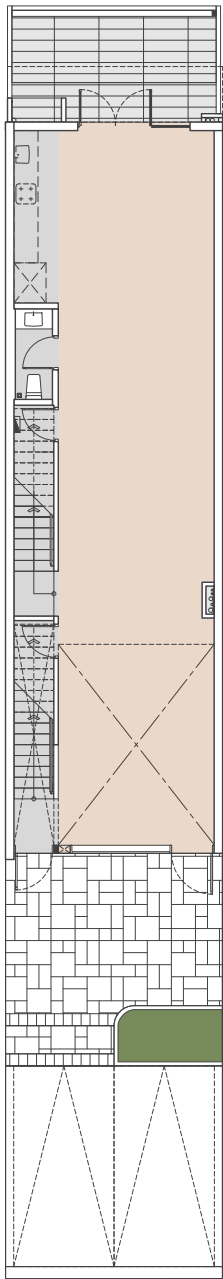
Master Bedroom x 1
Bedroom x 2
Bathroom x 2
Storage x 1

Open Terrace

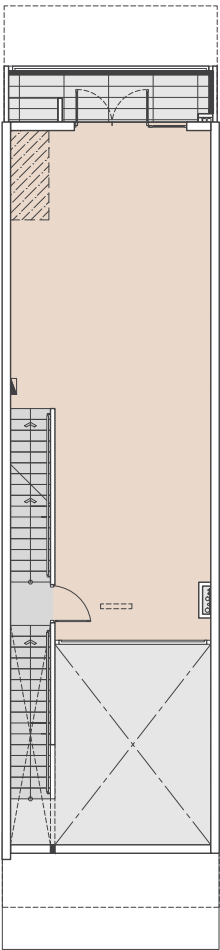
Unit Type **A2**

Retail Area

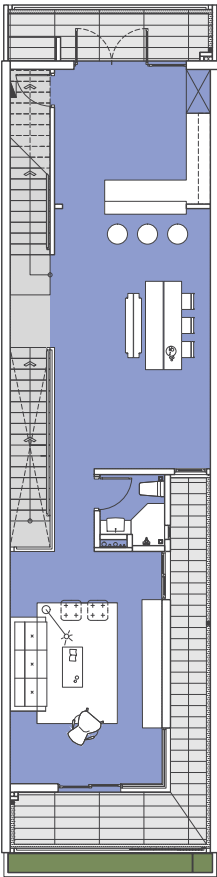
Residential Area



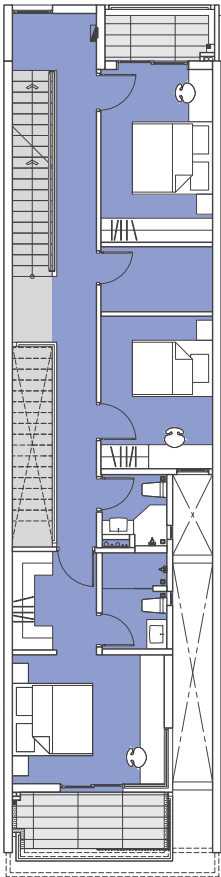
Ground Floor



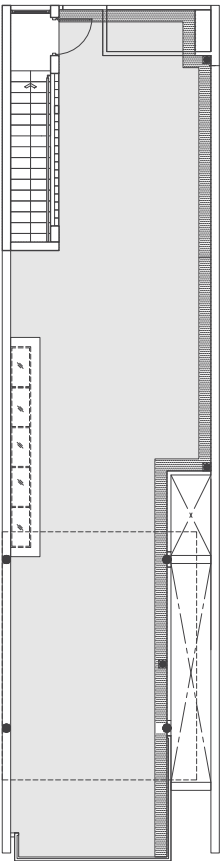
Mezzanine Floor



First Floor



Second Floor



Roof Floor

LAND SIZE
5.2m x 24.9m

HOUSE SIZE
5.2m x 17.95m

Retail Space

Retail Space

Living Room x 1
Dining Room x 2
Bathroom x 2
Kitchen x 1

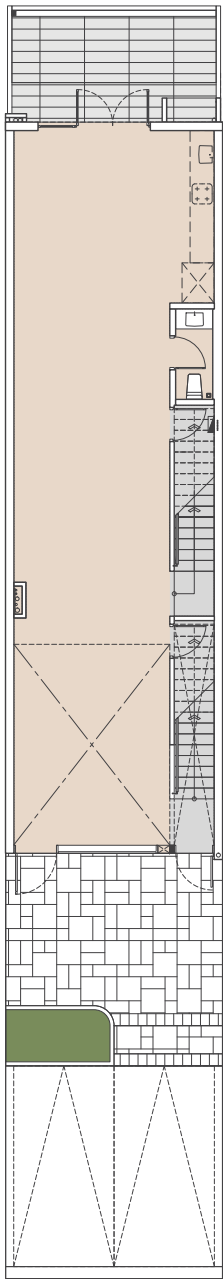
Master Bedroom x 1
Bedroom x 2
Bathroom x 2
Storage x 1

Open Terrace

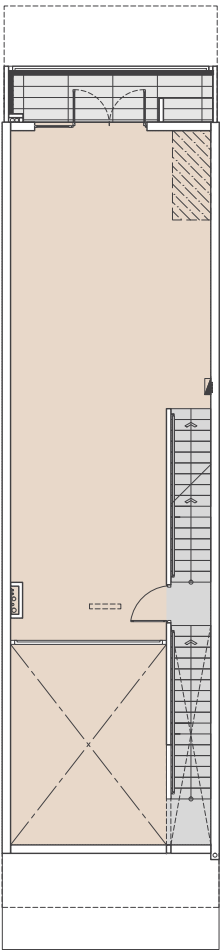
Unit Type **A3**

Retail Area

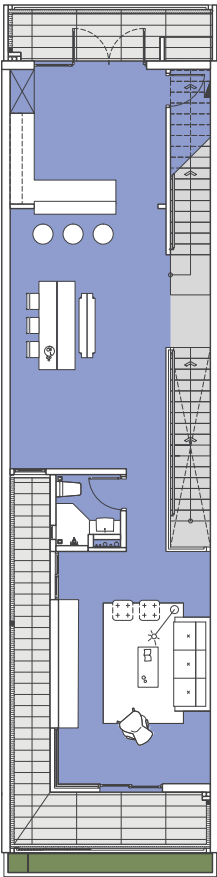
Residential Area



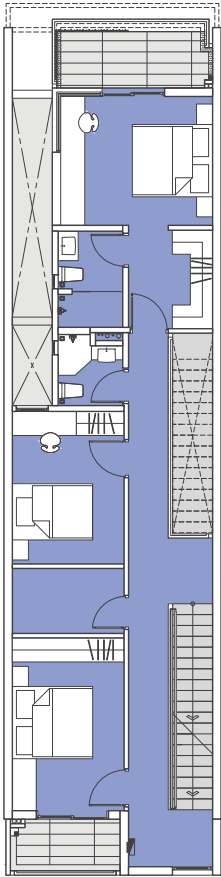
Ground Floor



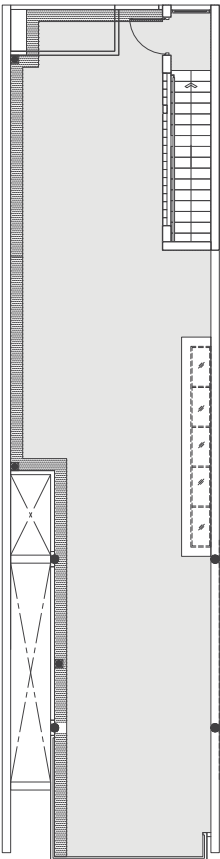
Mezzanine Floor



First Floor



Second Floor



Roof Floor

LAND SIZE
5.2m x 24.9m

HOUSE SIZE
5.2m x 17.95m

Retail Space

Retail Space

Living Room x 1
Dining Room x 2
Bathroom x 2
Kitchen x 1

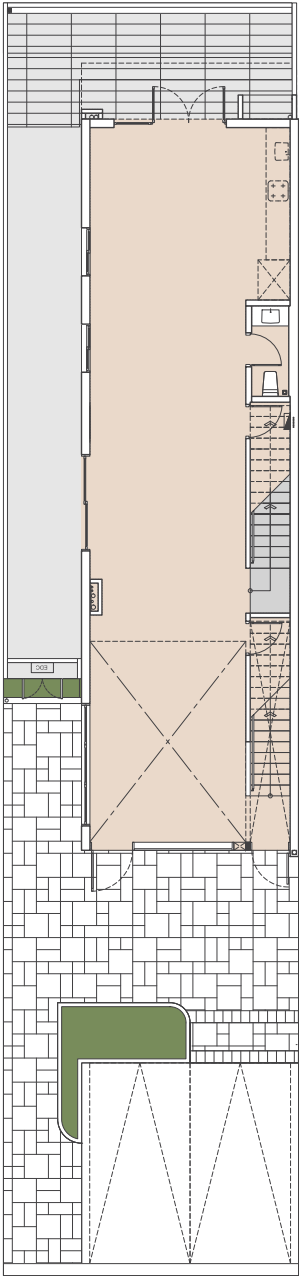
Master Bedroom x 1
Bedroom x 2
Bathroom x 2
Storage x 1

Open Terrace

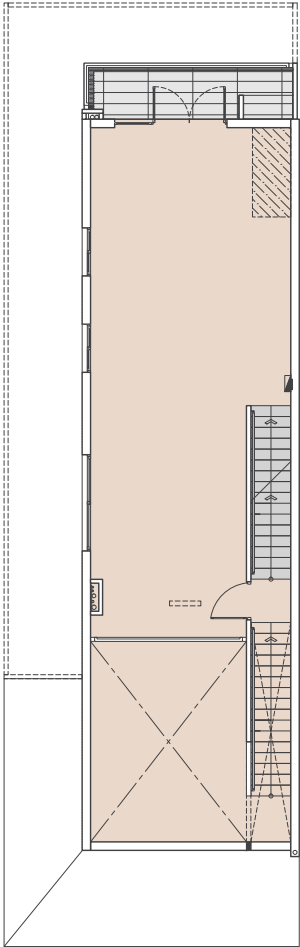
Unit Type **A4**

Retail Area

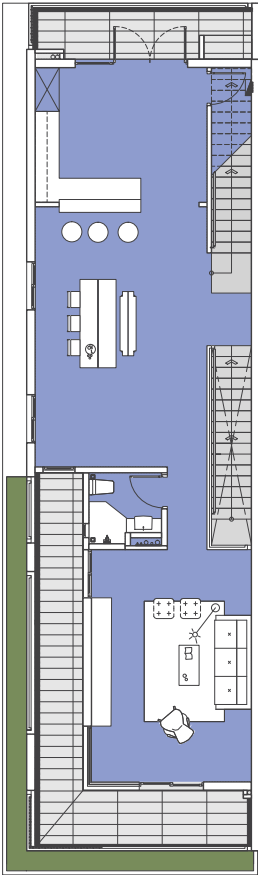
Residential Area



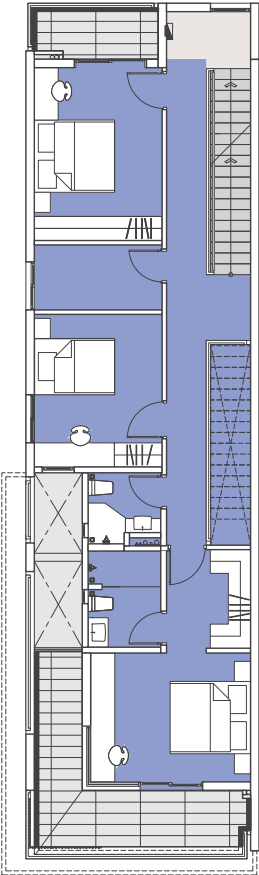
Ground Floor



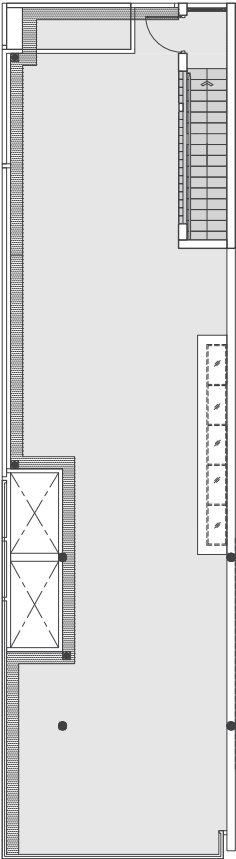
Mezzanine Floor



First Floor



Second Floor



Roof Floor

LAND SIZE
5.2m x 24.9m

HOUSE SIZE
5.2m x 17.95m

Retail Space

Retail Space

Living Room x 1
Dining Room x 2
Bathroom x 2
Kitchen x 1

Master Bedroom x 1
Bedroom x 2
Bathroom x 2
Storage x 1

Open Terrace





ISI PARK SHOPHOUSE



 **+855 81 888 598**

 sela.lan@urbanlandasia.com