



Embassy Residences: Where Luxury Meets Lifestyle

**Limited Units
Available —————
Contact Us Today!**



**EMBASSY
RESIDENCES**



Located in the exclusive Tonle Bassac Embassy District, just a short drive from the restaurants and shopping of BKK1, Embassy Residences consists of 85 residential units offering open concept floor plans, modern interiors, and upscale European fixtures and finishes.

The spaciousness carries outside to oversized balconies with views of the Tonle Bassac River, the Phnom Penh Skyline and Diamond Island.

AMENITIES



Security
CCTV



Reception
Service



Alarm & Fire
Sprinkler System



Car Parking



2 Passenger
Lifts



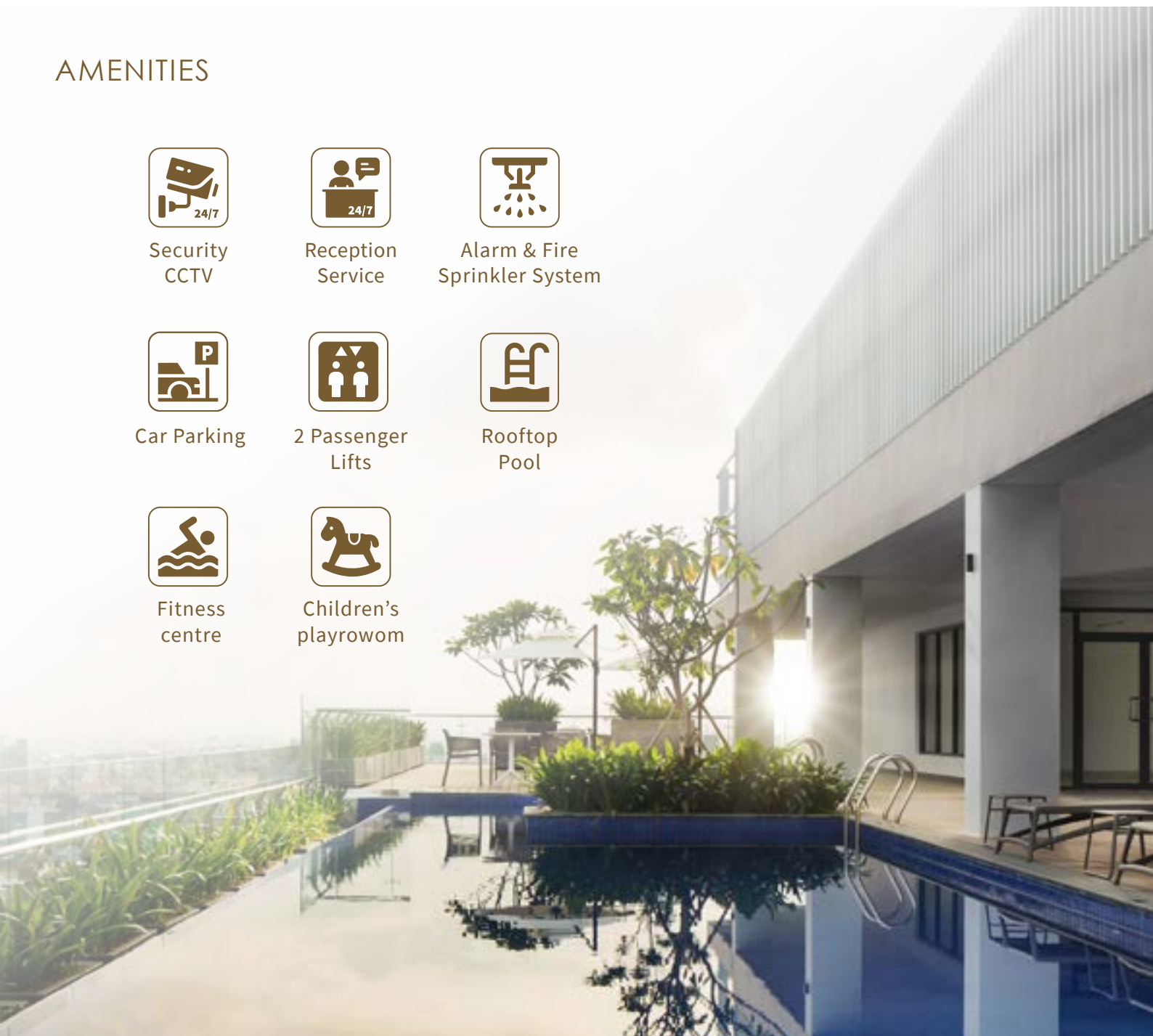
Rooftop
Pool



Fitness
centre



Children's
playroom





TYPE 1 | SUITE ROOM

UNIT - 12A04

71 sqm

GROSS AREA



SOUTH
FACING



FURNITURE
FURNISHED



TYPE 2 | ONE BEDROOM

UNIT - 12A02 & 1402

82 sqm

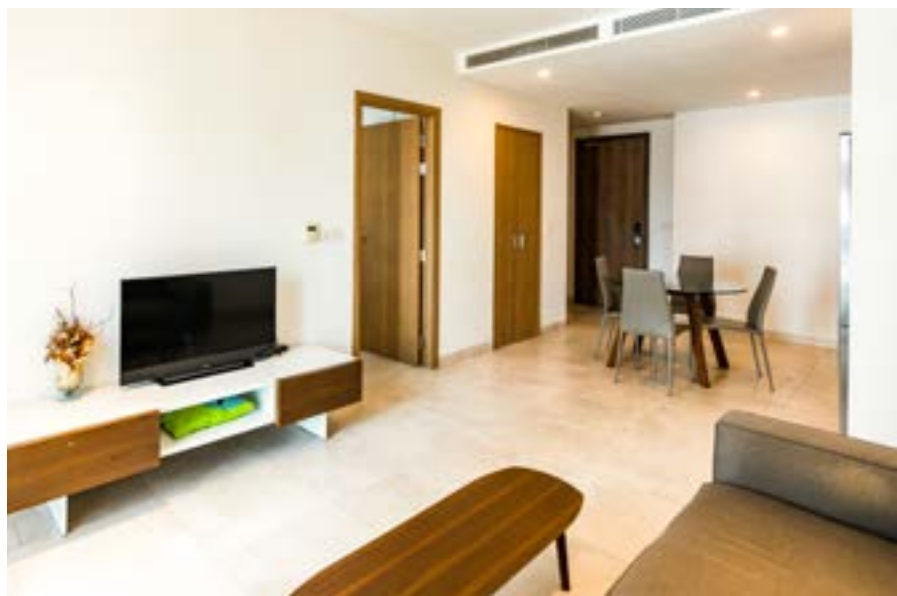
GROSS AREA



SOUTH
FACING



FURNITURE
FURNISHED



TYPE 3 | ONE BIG BEDROOM

UNIT - 1605

189 sqm

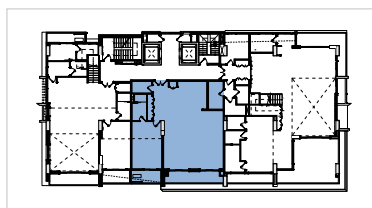
GROSS AREA



SOUTH
FACING



FURNITURE
FURNISHED



TYPE 4 | TWO BEDROOMS

UNIT - 101

153 sqm

GROSS AREA



SOUTH
FACING



FURNITURE
FURNISHED






ALL WITHIN REACH

- 5 mins to Toul Tom Pong area
- 5 mins to Boeung Keng Kong Area
- 7 mins to Aeon Mall Phnom Penh
- 10 mins to Independence Monument
- 10 mins to Diamond Island City
- 11 mins to Chip Mong 271 Mega Mall
- 12 mins to International School of Phnom Penh
- 15 mins to Aeon Mall Mean Chey



Discover Your New Home at Embassy Residences!

Visit Our Actual Units Today

 +855 81 888 598

 sela.lan@urbanlandasia.com

 urbanlandasia.com/projects/embassy-residences



< Scan here

#13, Street 41,
Sangkat Tonle Bassac
Khan Chamkarmon,
Phnom Penh,
Cambodia

